



世王钢管

SHIWANG STEEL PIPE

大型直缝钢管生产商

铸国际信赖品牌 造世界依重精品

Forge an internationally trusted brand
create world-reliable high-quality products



About Us

关于我们

世王钢管

SHIWANG STEEL PIPE

世伟工贸集团专注于大口径不锈钢特材直缝管的生产研发。2024年公司对制管设备进行了全面大幅度升级。生产能力跻身全国前列，年生产能力可达20万吨。

公司现有专业技术人员50余人，各种生产加工设备80余台，各种自动生产线近10条，厂区总面积200余亩。公司每年都扩大生产规模，不断研发改进生产工艺，引进高精尖技术人才，加大科技创新投入，先后获评“科技型中小企业”“国家高新技术企业”等称号，并取得“ISO9001质量管理体系”“ISO45001职业健康安全管理体系”“ISO14001环境管理体系”和“AAA级信用企业”认证，管理模式也在不断优化升级。

公司产品主要用于石油、天然气、水、蒸汽、煤气等高、中、低压流体输送管道及打桩、桥梁、建筑等结构用钢管，并承担了国内外标志性工程建设，产品销往各个地区。

世伟工贸致力于为世界工业提供优质产品与技术和服务，成为全球用户首选品牌，也为世界工业的发展做出自己更大的贡献。

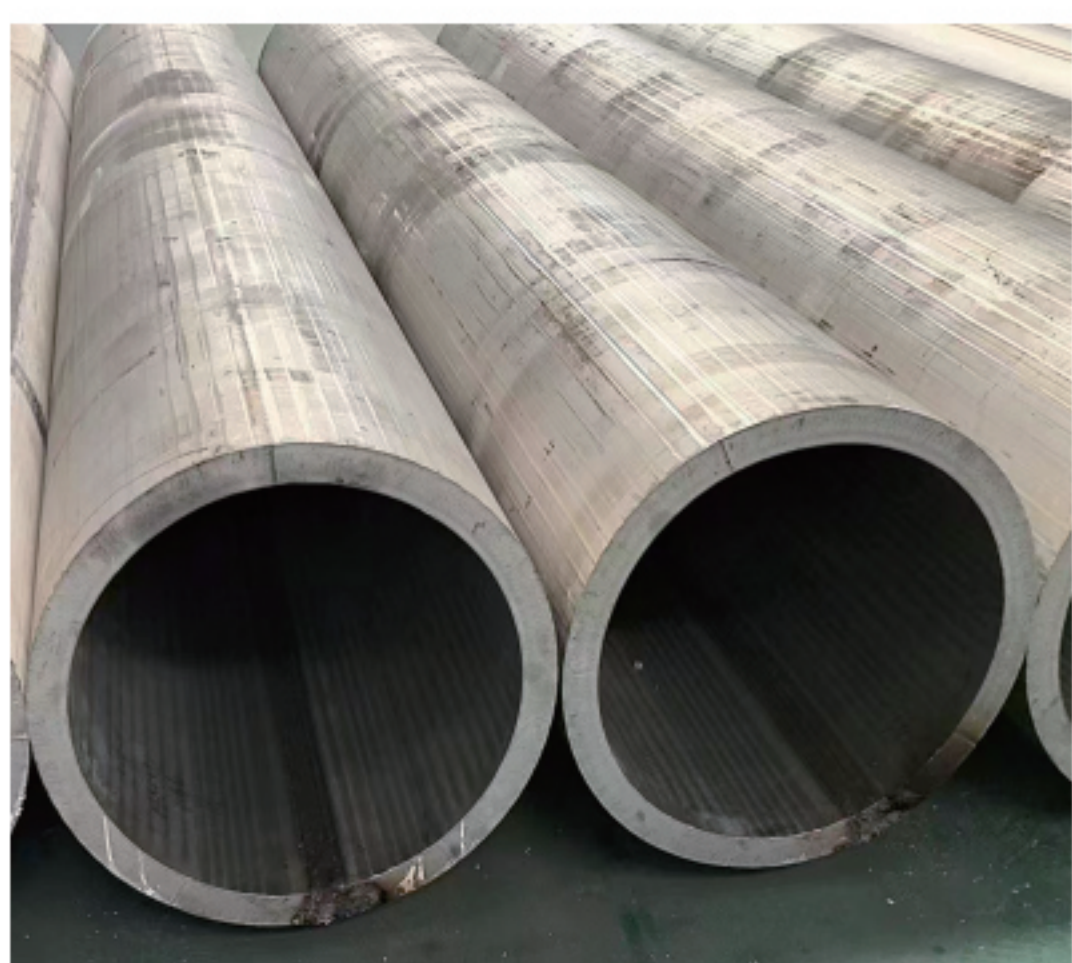
Shiwei Industrial and Trade Group specializes in the production and research & development of large-diameter stainless steel special material straight seam pipes. The company's production capacity ranks among the top in the country, with an annual capacity of up to 200,000 tons.

The company currently employs over 50 technical staff and operates more than 80 production and processing machines, including nearly 10 automatic production lines. The factory covers a total area of 200 acres. The company's products are primarily used in the transportation of high, medium, and low-pressure fluids such as oil, natural gas, water, steam, and coal gas, as well as steel pipes for piling, bridges, and construction. Shiwei Industrial and Trade has undertaken several landmark domestic and international engineering projects, and its products are sold across various regions.

Shiwei Industrial and Trade is committed to providing high-quality products, technology, and services to the global industrial market.

产品展示

OUR PRODUCTS



公司全面通过ISO9001质量管理体系、ISO45001职业健康安全管理体系、ISO14001环境管理体系认证，公司旗下产品均由 **PICC**  中国人民保险 承保。





产品原料 Raw material supply

304、316、409、609 等型号不锈钢以及 2205,2507, 钛合金、镍合金等特殊金属材料。

Stainless steel models such as 304, 316, 409, 609 as well as special metals like 2205, 2507, titanium alloy, and nickel alloy.

产品规格尺寸 Specification

产品 Goods	规格尺寸 Specification
不锈钢直缝钢管/Stainless steel pipe	外径(OD) ϕ 219 - ϕ 1620mm , 壁厚(WT) 5 - 70mm
方管, 矩形管/Square pipe, rectangular pipe	外径(OD) 按需定制Custom-made , 壁厚(WT) 5 - 70mm
承接大型钣金件加工定制 Undertaking custom processing of large sheet metal parts	

主要生产标准 Main Production standards

序号 Item No.	标准类型 Standard type	生产标准 Standard
1	欧标/EN	EN10216-5 ; EN10216-2
2	德标/DIN	DIN 17456 ; DIN 17458
3	美标/ASTM	ASTM A312;A376;A213;A269;A511; A789;A790;A358;A928A403;A815;B163 ;B423;B407;B668
4	日标/JIS	JIS G3459 ; G3463
5	俄标/GOST	GOST 9941;GOST 5632
6	国标/GB	GB/T14975;T14976;GB13296,GB5310;GB/T21833; GB/T12771;GB/T13401;GB/T12459;HG20537;GB/T12459;GB/T13401
7	API	API5LC
8	NORSOK	NORSOKM-650



资质认证



世王钢管
SHIWANG STEEL PIPE

大型直缝钢管生产商

我们的产品应用于

Our products are applied in



产品广泛应用于石油、化工、生物、造纸、电力、航天、船舶、等领域，深受客户青睐。

JCOE钢管在大型管道工程、输水输气工程、城市管网建设,钢结构建筑,桥梁打桩,市政建设和城市建设中扮演者的重要角色

The products are widely used in fields such as petroleum, chemical engineering, biology, papermaking, power, aerospace, and shipping, and are highly favored by customers.

JCOE steel pipes play an important role in large-scale pipeline projects, water and gas transmission projects, urban pipeline network construction, steel structure buildings, bridge pile driving, municipal construction, and urban construction.



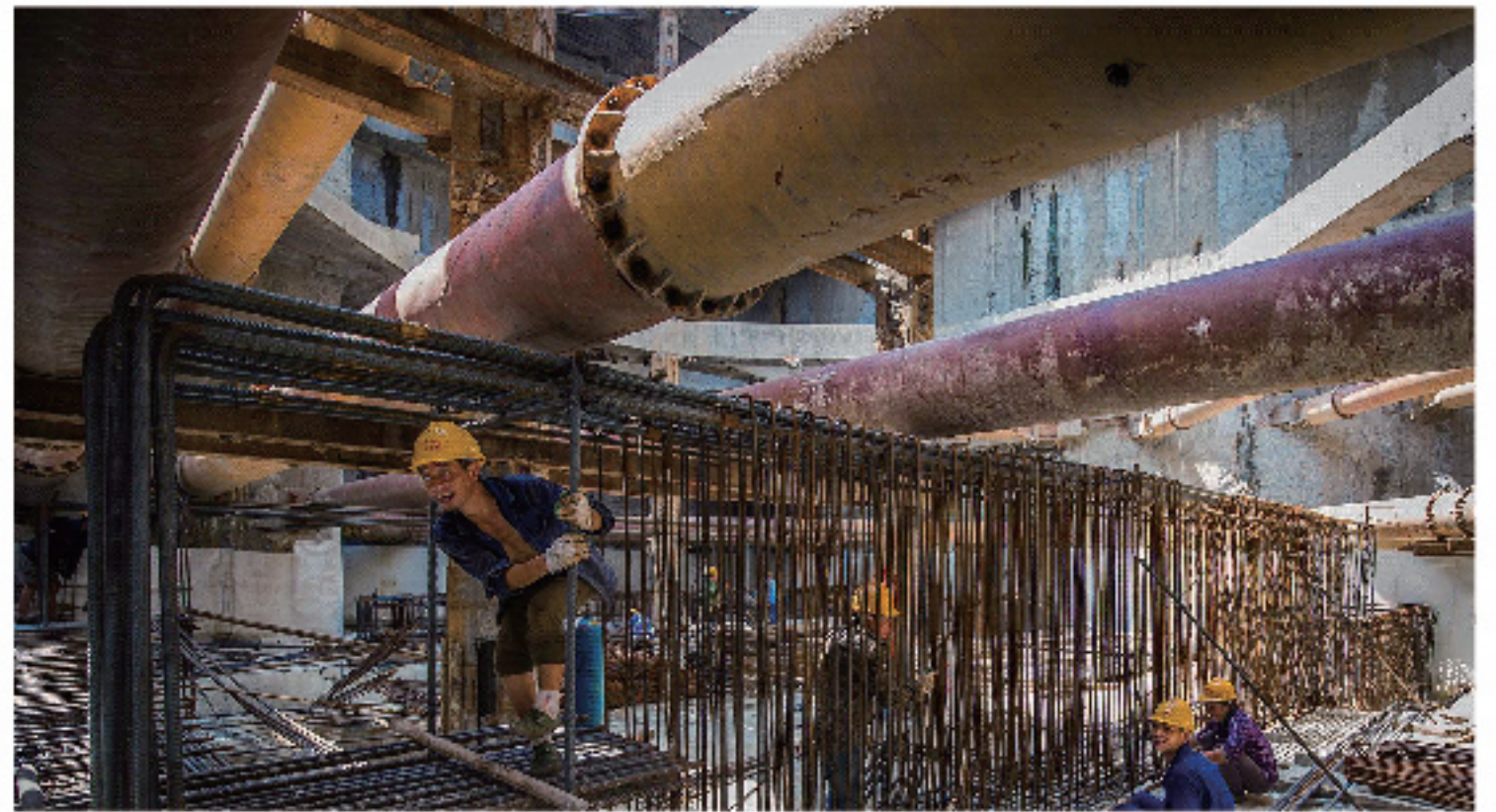
合作伙伴

END USER



工程案例

PROJECT REFERENCE






世伟工贸集团有限公司

SHIWEI INDUSTRY AND TRADE GROUP CO., LTD

 +86 - 15163639888

 1058065215@qq.com

 山东省青州市经济开发区荣利街

Rongli Street, Economic Development Zone, Qingzhou City, Shandong Province.